

CLONING CABLES

OPC-478UC **OPC-966U**
OPC-1122U **OPC-1862**
OPC-2338 **OPC-2344**
OPC-2363

DATA CABLE

OPC-2357

IMPORTANT

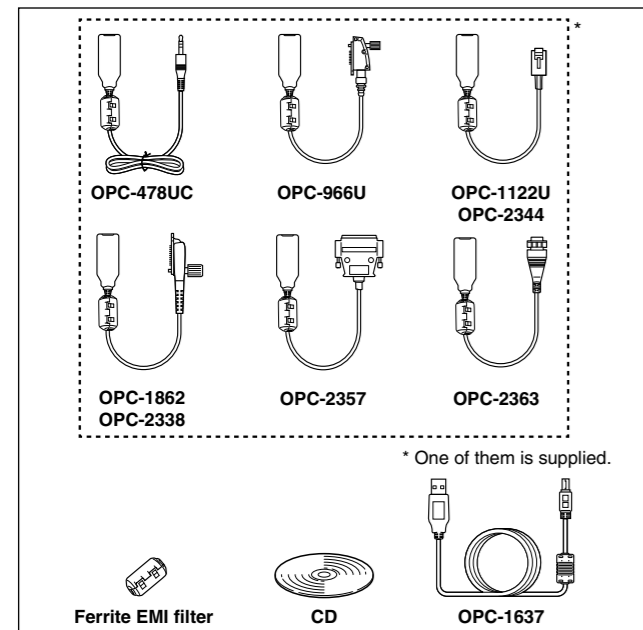
READ ALL INSTRUCTIONS carefully and thoroughly before using the cable.

SAVE THESE INSTRUCTIONS! — These instructions contain important safety and operating details for the cable.

EXPLICIT DEFINITIONS

WORD	DEFINITION
CAUTION	Equipment damage may occur.
NOTE	If disregarded, inconvenience only. No risk of personal injury, fire or electric shock.

SUPPLIED ITEMS



IMPORTANT: Some Icom cloning software can only select ports 1 to 4. When several external devices, such as a printer, scanner, or hard-disk drive are connected to the USB port, the port number available for the cloning software may be port 5 or higher. Therefore, you must first change the external device to a port number other than 1 to 4.

Thank you for choosing this Icom product. The cloning cable is designed to connect an Icom transceiver or receiver and a PC for data cloning using an Icom cloning software. The data cable is designed to connect an Icom transceiver (Rekeying Management transceiver) and a PC for doing the OTAR (Over-The-Air-Rekeying) operation. Please read these instructions thoroughly before using the cable.

PRECAUTIONS

CAUTION: USE ONLY INDOORS! NEVER expose the cables to rain, snow or any liquids.

NEVER let metal, wire, or other objects touch any internal part of the connectors.

CAUTION: NEVER use a USB cable other than the OPC-1637. **DO NOT** extend the USB cable. When the cable longer than 1.5 m (4.9 ft) is used, a data error may occur.

DO NOT use harsh solvents such as benzine or alcohol when cleaning, as they will damage the cables.

Ensure that your PC supports USB port operation by confirming the Universal Serial Bus controller is in the PC's Device Manager.

Connect the cable to the PC's USB port directly, or to a self-powered USB hub.

Approximately 20 mA of current is required. Insufficient current capacity of the USB port can cause unstable cloning operation and a data error.

- CAUTION:**
- You **MUST** install the USB driver **BEFORE** you connect the cable to the PC. Otherwise you will have to:
- ① disconnect the cable
 - ② install the driver
 - ③ reconnect the cable

◇ Cloning software compatibility

The connector of OPC-478UC, OPC-966U, and OPC-1122U USB type cloning cables are basically the same as the same numbered RS-232C type cables. Therefore, you can use the USB type cables with most of the Icom cloning software that require the RS-232C type cables.

SPECIFICATIONS

- Usable temperature range:

OPC-2338/OPC-2344	0°C to +60°C (+32°F to +140°F)
Others	-10°C to +60°C (+14°F to +140°F)
- Cable length (approximately):

OPC-478UC	520 mm (20.5 inches)
OPC-2363	300 mm (11.8 inches)
Others	250 mm (9.8 inches)
OPC-1637 (USB cable)	1500 mm (4.9 feet)
- Weight (approximately):

OPC-478UC	40 g (1.4 oz)
OPC-966U	54 g (1.9 oz)
OPC-1122U/OPC-2344	34 g (1.2 oz)
OPC-1862/OPC-2338	57 g (2.0 oz)
OPC-2357	66 g (2.3 oz)
OPC-2363	37 g (1.3 oz)
OPC-1637 (USB cable)	49 g (1.7 oz)

DISPOSAL



The crossed-out wheeled-bin symbol on your product, literature, or packaging reminds you that in the European Union, all electrical and electronic products, batteries, and accumulators (rechargeable batteries) must be taken to designated collection locations at the end of their working life. Do not dispose of these products as unsorted municipal waste. Dispose of them according to the laws in your area.

SYSTEM REQUIREMENTS

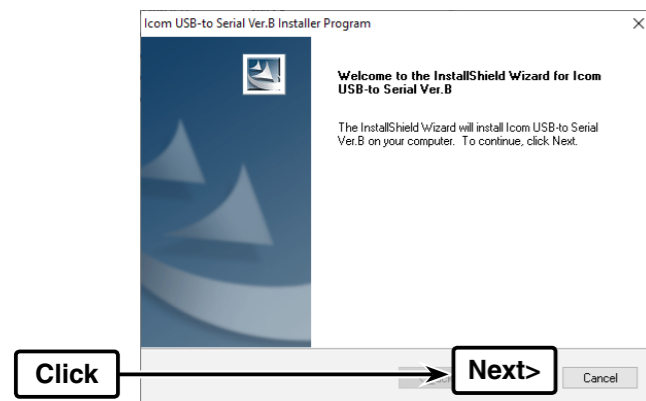
- Operating System (OS)

Microsoft® Windows® 10	32 bit/64 bit
Microsoft® Windows® 8.1*	32 bit/64 bit
Microsoft® Windows® 7	32 bit/64 bit
- /// * Except for Microsoft® Windows® RT.
- Others
 - A USB 1.1 or 2.0 port

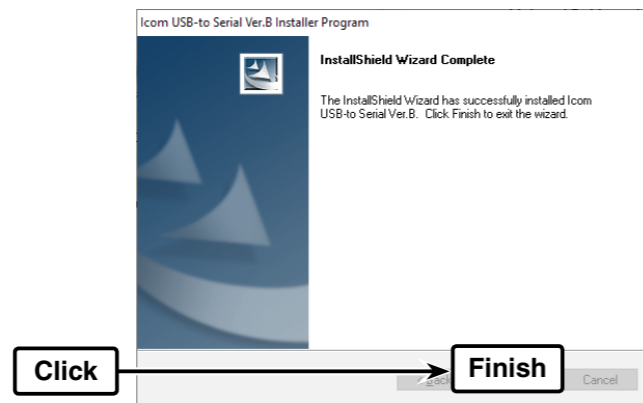
USB DRIVER INSTALLATION (STEP 1)

- When installing the USB driver, log in as the **administrator**.
- These instructions are based on using Windows 10.
- The displayed dialog boxes, indications or operations may differ slightly from the following instructions, depending on your operating system, its service pack level, and/or system settings.

- ① Make sure Windows has completed its start-up, and no other applications are running.
- ② Insert the supplied CD into the CD drive.
- ③ Double click "ICOM USB DriverInstaller_B.exe" contained in the CD.
 - When "User Account Control" appears, click [Yes] to continue.
- ④ "Welcome to the InstallShield Wizard for Icom USB-to serial Ver. B" appears. Click [Next >] to begin the installation.
- ⑤ If "Windows Security" appears, click "Install".



- ⑥ After the installation has completed, "InstallShield Wizard Complete" appears. Click [Finish].



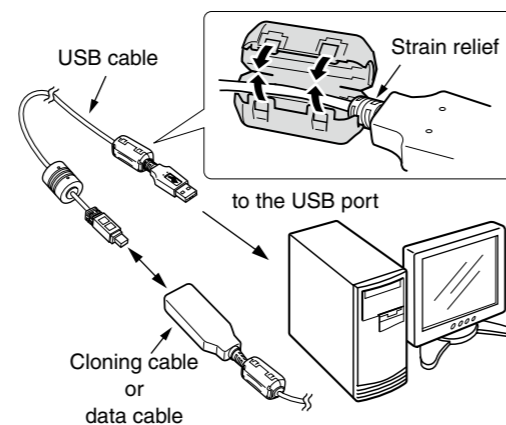
- NOTE:**
- After the USB driver installation has been completed (Step 1), connect the cable to the PC (Step 2 on the next section).

CABLE CONNECTION (STEP 2)

After completing Step 1, connect the cloning cable or data cable to the PC. The PC automatically starts the USB-to-Serial Comm Port installation.

Connect the cloning cable or data cable to the USB cable, and then the USB cable to the PC's USB port, as illustrated below.

- Attach the Ferrite EMI filter to the USB cable and the tip of the strain relief.



- Depending on the computer, a confirmation screen for restart is displayed.

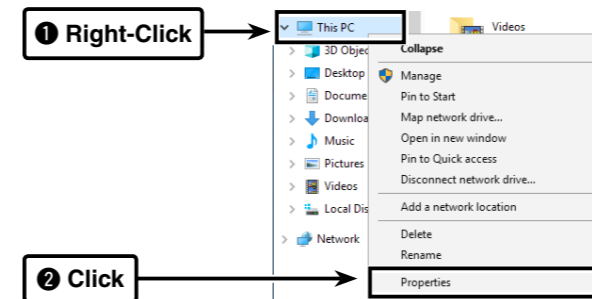
COM PORT CONFIRMATION (STEP 3)

After the driver installation has completed, confirm the driver availability and the port number. The COM port number is used to set communications with the cloning software.

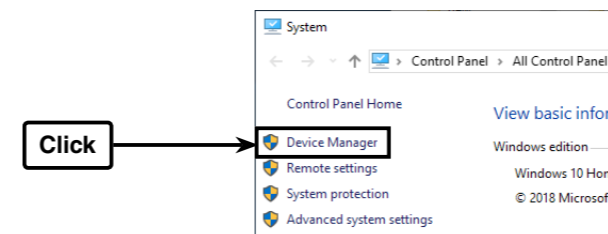
- ① Select "Desktop" and click the folder icon at the bottom of the screen.
 - The "Libraries" window is displayed



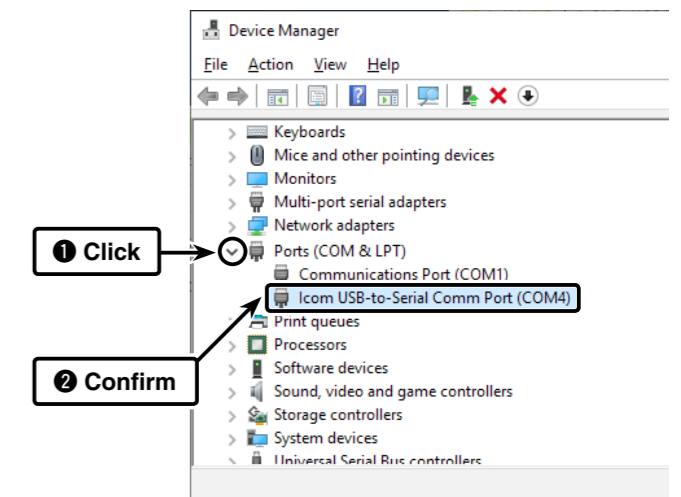
- ② Right-Click [This PC], and then click [Properties], as shown below.
 - The "System" window appears.



- ③ Click [Device Manager].
 - "Device Manager" appears.



- ④ Click the ">" next to "Ports (COM&LPT)."
 - Confirm "Icom USB-to-Serial Comm Port (COM*)" is displayed.
 - In this example, the COM port number is "4."



- If the COM port number is not displayed, or several numbers are displayed at the same time like "Icom USB-to-Serial Comm Port (COM*)(COM*)", the driver may not be properly installed. In such case, uninstall the USB driver and install it again.
- You can uninstall the program using the "Uninstall a program" in the Windows Control Panel.